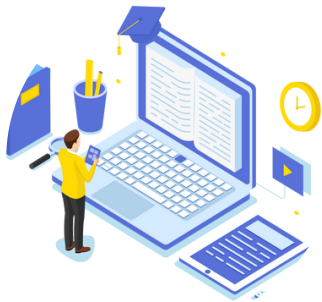


## Scholar

School management ERP software has emerged as a game-changer, empowering school owners and teachers and upgrading the campus like never before.



Advanced  
School  
Management  
System

## Contact Us



+91 9447872867  
+91 8590322609  
+91 9880773692



contact@accuratesoftware.online  
jjju@accuratesoftware.online



Church Nagar 22 B  
Angamaly, 683572  
Kerala



[www.accuratesoftware.online](http://www.accuratesoftware.online)

# Scholar School Management System



For More Information

# Scholar School Management System

With our integrated software for school management, you can easily manage everything from driving school admissions to delivering excellent education to your students.

"Advanced  
School  
Management  
System"

## Why Choose Scholar

- > Seamless Communication
- > Fee Management
- > Student Record Maintenance
- > Cloud Based ERP
- > Reports And Analytics
- > Online Admission Management

### Seamless Communication

We provide SMS for seamless communication between parents and school. also support SMS between staffs

### Fee Management

Manage student fees like course fees, admission fees and bus fees on one screen with SMS alerts and online payment support.

### Student Record Maintenance

Once a student is admitted all the data related to the student can be accessed from the application's student screen

### Cloud Based ERP

We use the cloud to host our services. Mobile, laptop, or desktop users can access it from anywhere at any time, and the data is protected and regularly backed up.

### Report And Analytics

Scholar support different reports, like fee payment, fee due, cash inflow, and class-wise student reports, for better analytics over the student data.

### Online Admission Management

The whole admission activity can be managed online. The school can issue an application to the parents via SMS, and the parents can fill out the data easily, and then the application can be admitted by the school staff.

### ID Card for Students and Employees

Can create ID cards for both students and employee. Can modify back and front designs of ID card by updating the Images. Scholar makes the ID card management super easy.

